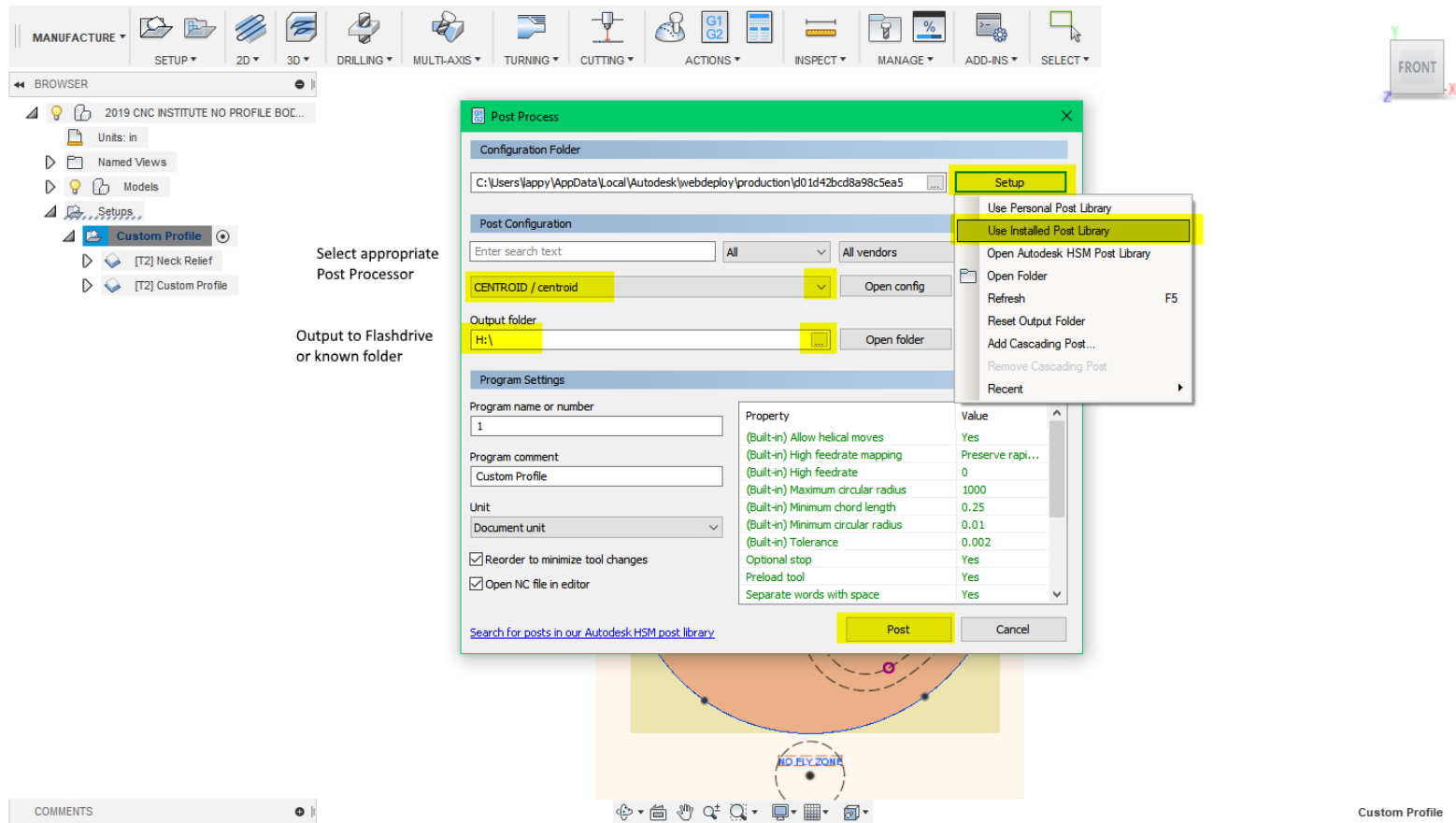


# STEP 5 Post Process

<https://knowledge.autodesk.com/support/fusion-360/learn-explore/caas/sfdcarticles/sfdcarticles/How-to-install-a-cloud-post-in-Fusion-360.html>

The screenshot displays the Fusion 360 software interface. At the top, the 'MANUFACTURE' ribbon is active, showing various tool icons for 'SETUP', '2D', '3D', 'DRILLING', 'MULTI-AXIS', 'TURNING', 'CUTTING', 'ACTIONS', 'INSPECT', 'MANAGE', 'ADD-INS', and 'SELECT'. The left-hand 'BROWSER' pane shows a tree view with '2019 CNC INSTITUTE NO PROFILE BOC...' expanded to 'Setups', where 'Custom Profile' is selected. A right-click context menu is open over 'Custom Profile', with 'Post Process' highlighted in yellow. Other menu items include 'Edit', 'New Operation', 'Create From Template', 'New Folder', 'Generate (Ctrl+G)', 'Simulate', 'Setup Sheet', 'Clear Toolpath', 'Machining Time', 'Suppress', 'Protect', 'Optional', 'Duplicate (Ctrl+D)', 'Copy', 'Delete (Del)', 'Edit Notes', 'Show Log (Ctrl+L)', 'Expand All Children', and 'Collapse All Children'. The main workspace shows a 2D model of a guitar body with several 'NO FLY ZONE' annotations: one at the top, one at the bottom, and one on the right side labeled 'WITH ROUTER ELEMENT'. A 'PROFILE CHECK LINE' is also visible. A 'FRONT' view indicator is on the right. At the bottom, a 'COMMENTS' pane is visible on the left, and a 'Custom Profile' label is on the right.



Make File name participants name after post

Checklist??

Double Check code

Highlight important values (WCS, ZMIN, S&F, etc)

Limit Bounds

If somethings wrong where and how to fix